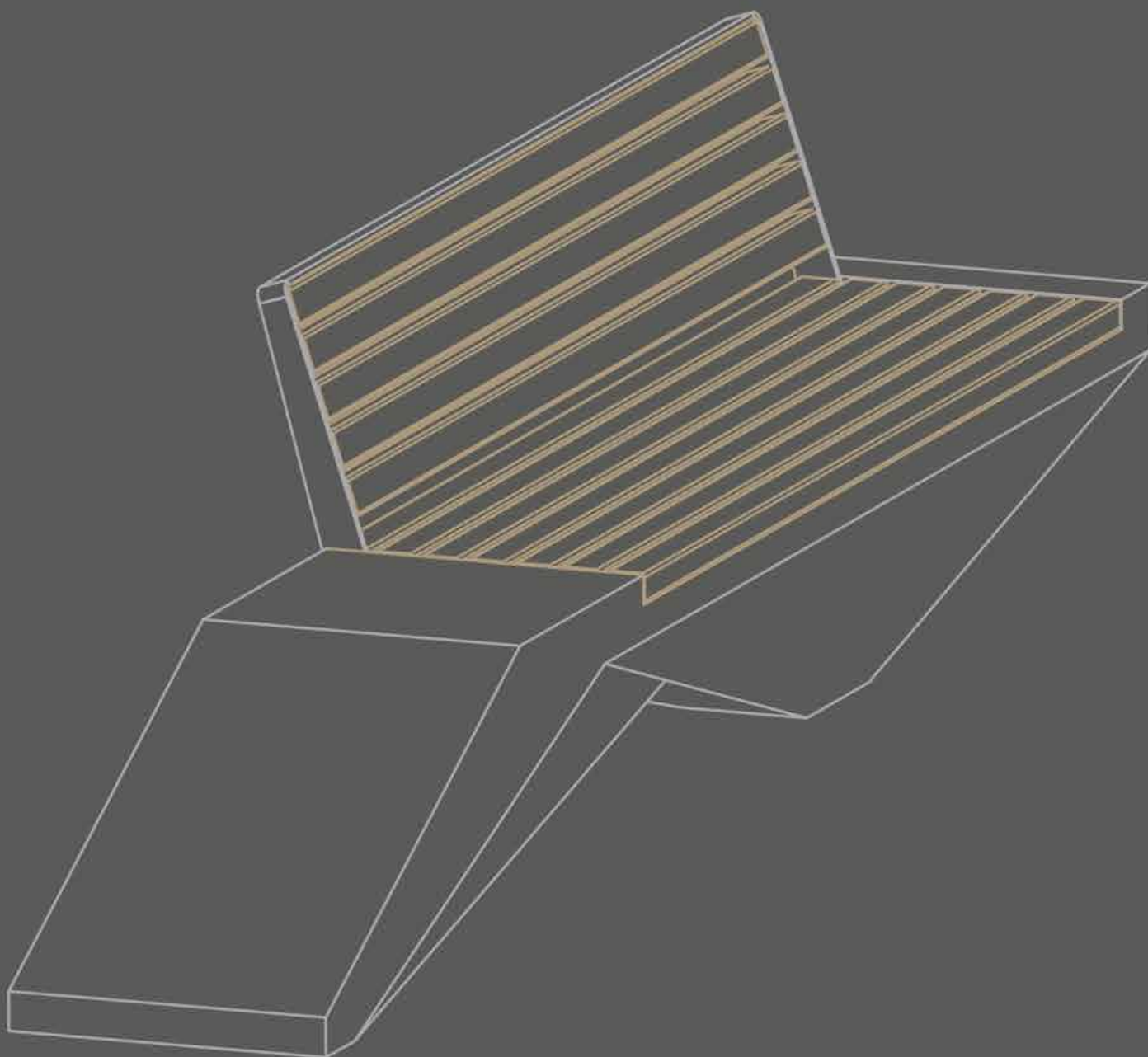




ENCHO ENCHEV - ETE

STREET & URBAN FURNITURE

DESIGN AND DEVELOP CUSTOM PROJECTS



MATERIALS

CONCRETE

TYPES OF CONCRETE



#11 GREY CONCRETE



#12 WHITE CONCRETE

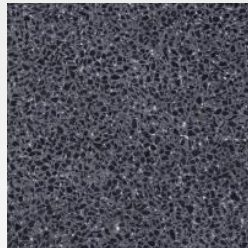
High quality grey or white Portland cement is used in the production of the high performance concrete (HPC) in combination with natural marble or granite aggregates and inert materials. Concrete structure is reinforced. Concrete is recyclable due to the absence of resins and adhesive polymeric agents.

NATURAL MARBLE AGGREGATES

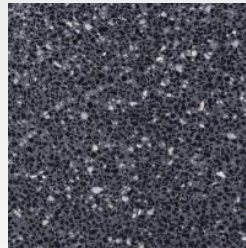
POLISHED AGGREGATE



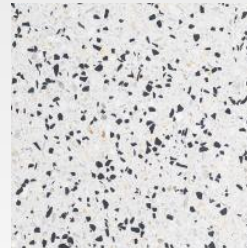
#31 WHITE



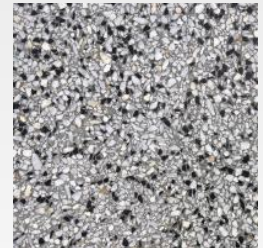
#32 BLACK



#33 BLACK-SCATTER



#34 SCATTER



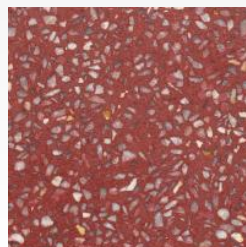
#35 GREY



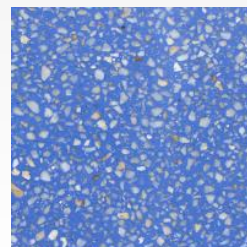
#22 BROWN



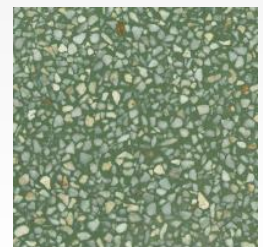
#26 YELLOW



#27 RED



#28 BLUE



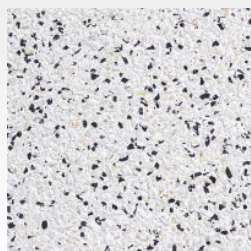
#29 GREEN

Polished surface : treatment performed either mechanically or manually, removing the surface layer and revealing the homogeneous structure of the material. This type of treatment creates a characteristic smooth surface.

EMBOSSSED AGGREGATE



#51 WHITE



#52 SCATTER



#53 GREY



#42 BROWN

Embossed surface : treatment performed either mechanically or manually. This type of processing allows the natural marble or granite aggregates to stand out and emphasize the depth of the structure.

The aggregates are a mixture of multi-colored, natural, marble or granite stone fractions with Portland cement and inert materials. The particles have selected structural characteristics and are available in various combinations with grey or white Portland cement, depending on their properties and requirements for the manufacture of the products.

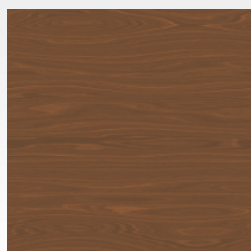
The additionally applied impregnant and lacquer finish give the product excellent anti-corrosion, UV protection and a refined finish.

WOOD/TIMBER

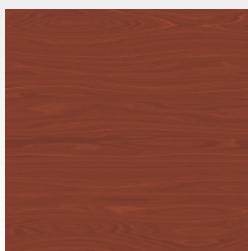
SOFTWOOD - PINE (SPRUCE)



#61 PINE COLOR



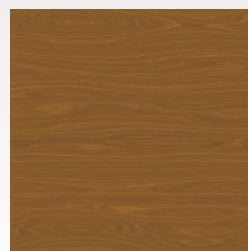
#62 WALNUT COLOR



#63 MAHOGANY COLOR



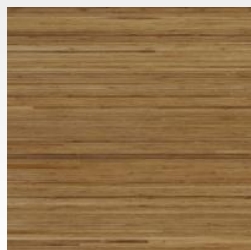
#64 ROSEWOOD COLOR



#65 OAK COLOR

Spruce is offered as solid wood with a selected part of the structure of the tree. The wood is treated with a water-based pigmented impregnator. Color range is selected and ordered upon request by the customer and is available in the following options: pine color, walnut color, mahogany color, rosewood color, oak color.

HARDWOOD – BAMBOO, IROKO



#66 BAMBOO



#67 IROKO

Hardwood is available on request and Encho Enchev - ETE reserves the right to choose the most appropriate type of hardwood depending on the product and the availability of the relevant type of exotic wood on the market.

- **Bamboo** wood is heat-treated and highly compressed during the special production process. As a result of this process, a material with extremely high technical strength and durability characteristics is obtained. It is designed to withstand extreme loads. The product is carbonized and special care coated. The company Encho Enchev - ETE offers rhythmic deliveries of this type of raw material and is a preferred product because of its characteristic
- **Iroko** is treated with oil for a better aesthetic appearance, but is also weather resistant without coating due to the high density and hardness of the wood.

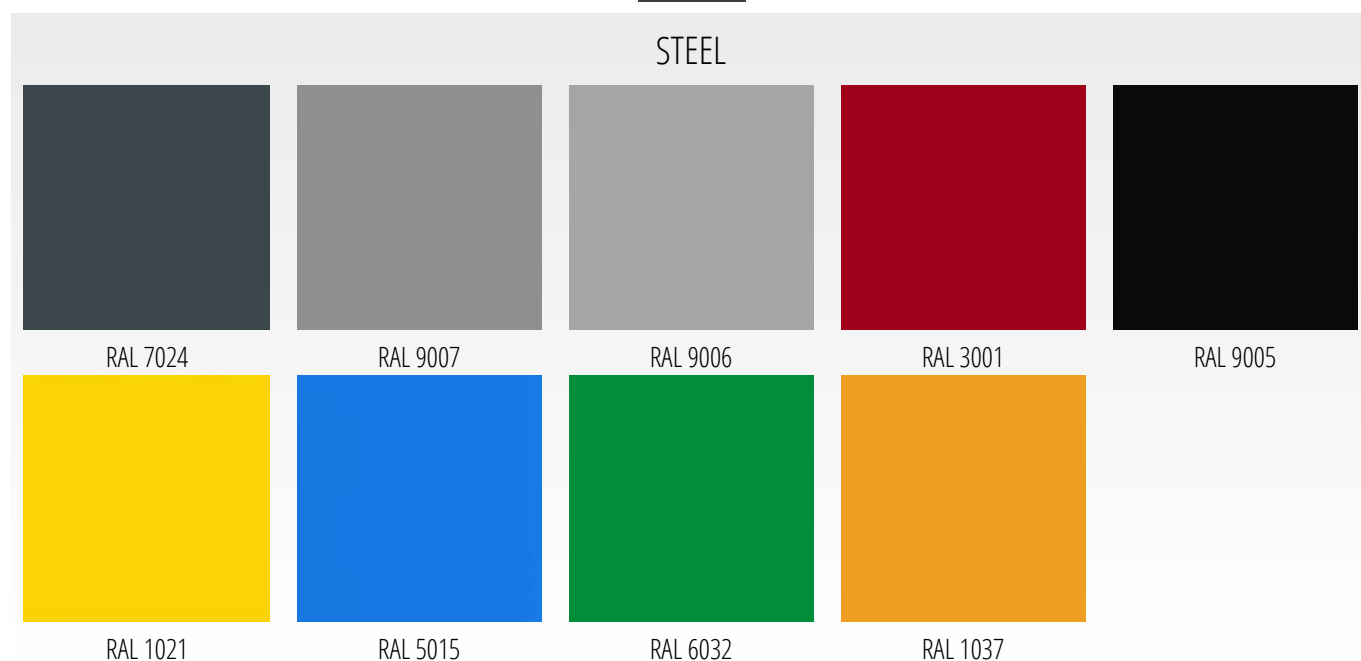
Wood is a natural material and every beam/plank is not identical to the others, and there may be slight differences in the appearance of the woodthread, the tone and the natural imperfections, despite the processing. As the weather changes (hot climate, dry climate, humid climate, cold climate), the wood structure changes and can increase or decrease its volume, causing cracks or fissures. Although it is a natural process, it should be noted.

To minimize the effects of weather conditions, the boards are treated with high-performance impregnants and water-based varnishes that extend the life of the wood and slow down the aging of the material. This procedure does not cancel the subsequent periodic maintenance of the timber in order to keep its quality for as long as possible.

Depending on the type of wood, a certain color range is available, which is ordered upon request by the client. Encho Enchev - ETE works with FSC certified timber. The timber is delivered to the end user without the need of subsequent mechanical treatment.

METAL

STEEL



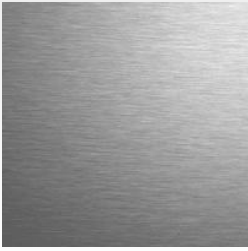
The company Encho Enchev - ETE uses polyester paints with a pearl matte effect as standard, which provide a textured opaque coating. To compare relative RAL colors, use the commercial RAL palette. Colors outside the specified color range of Encho Enchev - ETE are subject to an additional charge.

Processing of steel elements of different thickness and of different brands, depending on the specification of the product, goes through the following steps:

- cleaning of the steel with a shot blasting machine
- electrogalvanization*
- application of zinc ester-epoxide hybrid primer
- application of electrostatic solid powdered polyester

(*) This treatment increases the corrosion resistance of the steel and is subject to additional payment (on request only).

STAINLESS STEEL



#81 INOX

Encho Enchev - ETE uses AISI 304 stainless steel.

CHARACTERISTICS AND MAINTENANCE

Not all products are available in all types of treatments and coatings. To check the types of treatments and coatings available for each product, please see the section on the specific product.

The higher weight products are fitted with stainless steel threads (dowels), where ring bolts can be fitted for ease of installation and transportation.

To keep the product's appearance unchanged for a long period of time, we recommend cleaning of the products with water and a suitable detergent and periodically impregnated.

For more information on our products, contact the company.

* ALL MATERIALS USED IN THE MANUFACTURE OF THE PRODUCTS ARE RECYCLABLE.

CONCRETE BENCHES



CONCRETE BENCHES



CONCRETE BENCH

MODEL 199

📏 L: 330 cm B: 50 cm H: 45 cm 📊 1000 kg



CONCRETE BENCH

MODEL 234

📏 L: 330 cm B: 50 cm H: 45 cm 📊 900 kg



CONCRETE BENCH

MODEL 246

📏 L: 330 cm B: 61 cm H: 84 cm 📊 935 kg



CONCRETE BENCH

MODEL 252

📏 L: 200 cm B: 61 cm H: 83 cm 📊 440 kg



CONCRETE BENCH - YIN AND YANG

MODEL 259

📏 H: 44 cm Ø: 220 cm 📊 1640 kg



CONCRETE BENCH

MODEL 186

📏 L: 230 cm B: 45 cm H: 45 cm 📊 600 kg



CONCRETE BENCH

MODEL 233

📏 L: 230 cm B: 45 cm H: 45 cm 📊 520 kg



CONCRETE BENCH

MODEL 247

📏 L: 230 cm B: 56 cm H: 84 cm 📊 535 kg

CONCRETE BENCHES



CONCRETE BENCH

MODEL 187

📏 L: 220 cm B: 54 cm H: 42 cm 📊 360 kg



CONCRETE BENCH

MODEL 195

📏 L: 295 cm B: 50 cm H: 45 cm 📊 950 kg



CONCRETE BENCH

MODEL 232

📏 L: 295 cm B: 50 cm H: 45 cm 📊 900 kg



CONCRETE BENCH

MODEL 248

📏 L: 295 cm B: 61 cm H: 84 cm 📊 930 kg



CLOTHES PEG BENCH

MODEL 138

📏 L: 222 cm B: 45 cm H: 42 cm 📊 740 kg



CONCRETE BENCH

MODEL 134

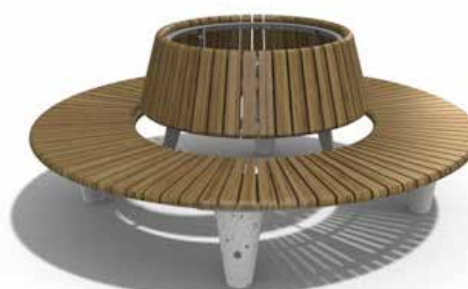
📏 L: 200 cm B: 50 cm H: 50 cm 📊 450 kg



CONCRETE BENCH

MODEL 159

📏 L: 200 cm B: 62 cm H: 82 cm 📊 630 kg



ROUND BENCH WITH BACKREST

MODEL 197

📏 H: 83 cm Ø: 200 cm 📊 195 kg

CONCRETE BENCHES



ROUND BENCH

MODEL 151

H: 43 cm Ø: 200 cm 140 kg



CONCRETE MODULAR BENCH

MODEL 156

L: 300 cm H: 40 cm 195 kg



CONCRETE BENCH

MODEL 185

L: 211 cm B: 36 cm H: 45 cm 215 kg



CONCRETE BENCH

MODEL 157

L: 211 cm B: 36 cm H: 45 cm 280 kg



CONCRETE BENCH

MODEL 83

L: 200 cm B: 45 cm H: 45 cm 330 kg



CONCRETE BENCH

MODEL 84

L: 200 cm B: 54,5 cm H: 89 cm 340 kg



CONCRETE BENCH

MODEL 211

L: 150 cm B: 45 cm H: 45 cm 265 kg



CONCRETE BENCH

MODEL 126

L: 200 cm B: 45 cm H: 50 cm 340 kg

CONCRETE BENCHES



CONCRETE BENCH **MODEL 212**

📏 L: 150 cm B: 45 cm H: 50 cm 📊 275 kg



CONCRETE BENCH **MODEL 119**

📏 L: 192 cm B: 50 cm H: 45 cm 📊 390 kg



CONCRETE BENCH **MODEL 120**

📏 L: 192 cm B: 55 cm H: 89 cm 📊 405 kg



CONCRETE BENCH **MODEL 183**

📏 L: 200 cm B: 45 cm H: 45 cm 📊 370 kg



CONCRETE BENCH **MODEL 179**

📏 L: 200 cm B: 52 cm H: 84 cm 📊 385 kg



CONCRETE BENCH **MODEL 178**

📏 L: 200 cm B: 45 cm H: 40 cm 📊 360 kg



CONCRETE BENCH **MODEL 237**

📏 L: 200 cm B: 63 cm H: 87 cm 📊 175 kg



CONCRETE BENCH **MODEL 238**

📏 L: 200 cm B: 38 cm H: 42 cm 📊 120 kg

CONCRETE BENCHES



CONCRETE BENCH

MODEL 239

📏 L: 400 cm B: 63 cm H: 87 cm 📊 290 kg



CONCRETE BENCH - DOLPHIN

MODEL 8

📏 L: 210 cm B: 92 cm H: 52 cm 📊 105 kg



CONCRETE BENCH - ANCHOR

MODEL 9

📏 L: 190 cm B: 145 cm H: 97 cm 📊 260 kg



CONCRETE BENCH

MODEL 39

📏 L: 190 cm B: 75 cm H: 90 cm 📊 145 kg



DOUBLE SIDED BENCH

MODEL 158

📏 L: 190 cm B: 132 cm H: 89 cm 📊 240 kg



DOUBLE LENGTH BENCH

MODEL 63

📏 L: 300 cm B: 75 cm H: 90 cm 📊 210 kg



CONCRETE BENCH

MODEL 99

📏 L: 190 cm B: 73 cm H: 80 cm 📊 150 kg



CONCRETE BENCH

MODEL 109

📏 L: 190 cm B: 77.5 cm H: 92 cm 📊 140 kg

CONCRETE BENCHES



CONCRETE BENCH **MODEL 110**

📏 L: 190 cm B: 45.5 cm H: 42 cm 📊 70 kg



CONCRETE BENCH - WHALE **MODEL 155**

📏 L: 190 cm B: 99 cm H: 101 cm 📊 155 kg



CONCRETE BENCH **MODEL 4**

📏 L: 190 cm B: 78.5 cm H: 83 cm 📊 105 kg



CONCRETE BENCH **MODEL 6**

📏 L: 190 cm B: 69 cm H: 80 cm 📊 105 kg



CONCRETE BENCH **MODEL 40**

📏 L: 234 cm B: 45 cm H: 42 cm 📊 170 kg



CONCRETE BENCH **MODEL 2**

📏 L: 171 cm B: 87 cm H: 81 cm 📊 120 kg



CONCRETE BENCH **MODEL 143**

📏 L: 190 cm B: 38 cm H: 40 cm 📊 50 kg



CONCRETE BENCH **MODEL 142**

📏 L: 190 cm B: 65 cm H: 81 cm 📊 80 kg

CONCRETE BENCHES



CONCRETE PICNIC TABLE **MODEL 108**

📏 L: 190 cm B: 148 cm H: 72 cm 📊 290 kg



CONCRETE PICNIC TABLE **MODEL 219**

📏 L: 190 cm B: 148 cm H: 72 cm 📊 260 kg



CONCRETE PICNIC TABLE **MODEL 116**

📏 L: 190 cm B: 148 cm H: 74 cm 📊 450 kg



CONCRETE PICNIC TABLE **MODEL 220**

📏 L: 190 cm B: 148 cm H: 74 cm 📊 420 kg



CONCRETE PICNIC TABLE **MODEL 118**

📏 L: 190 cm B: 148 cm H: 74 cm 📊 590 kg



CONCRETE PICNIC TABLE **MODEL 222**

📏 L: 190 cm B: 148 cm H: 74 cm 📊 560 kg



CONCRETE PLAY TABLE **MODEL 115**

📏 L: 190 cm B: 148 cm H: 74 cm 📊 450 kg



CONCRETE PLAY TABLE **MODEL 117**

📏 L: 190 cm B: 148 cm H: 74 cm 📊 590 kg

CONCRETE BENCHES



CONCRETE PLAY TABLE

MODEL 221

📏 L: 190 cm B: 148 cm H: 74 cm 📊 420 kg



CONCRETE PLAY TABLE

MODEL 223

📏 L: 190 cm B: 148 cm H: 74 cm 📊 560 kg



PLAY TABLE

MODEL 250

📏 L: 190 cm B: 148 cm H: 74 cm 📊 270 kg



PICNIC TABLE

MODEL 251

📏 L: 190 cm B: 148 cm H: 74 cm 📊 270 kg



CONCRETE PLANTER BENCH YIN-YANG**MODEL 260**

📏 H: 44 cm Ø: 220 cm 📊 1640 kg



CONCRETE PLANTER BENCH YIN-YANG**MODEL 261**

📏 H: 44 cm Ø: 220 cm 📊 1920 kg



CONCRETE PLANTER BENCH YIN-YANG**MODEL 262**

📏 H: 65 cm Ø: 220 cm 📊 1960 kg



CONCRETE PLANTER BENCH YIN-YANG**MODEL 263**

📏 H: 65 cm Ø: 220 cm 📊 2140 kg

CONCRETE BENCHES



ROUND PLANTER BENCH **MODEL 273**

H: 100 cm Ø: 300 cm 📦 1940 kg



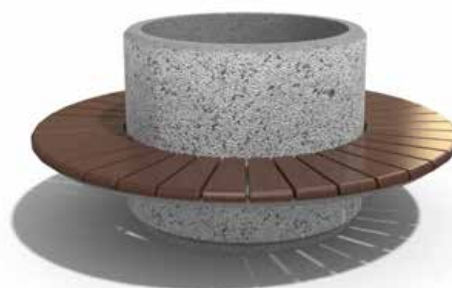
ROUND PLANTER BENCH **MODEL 275**

H: 80 cm Ø: 300 cm 📦 1640 kg



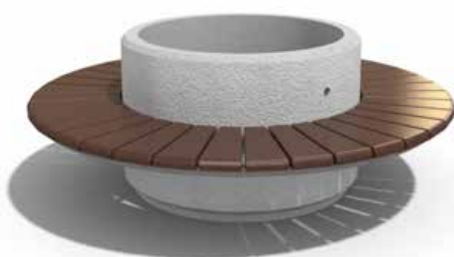
ROUND PLANTER BENCH **MODEL 92**

H: 65 cm Ø: 225 cm 📦 800 kg



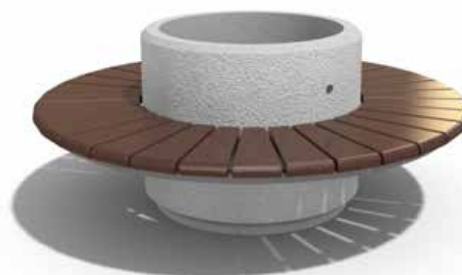
ROUND PLANTER BENCH **MODEL 193**

H: 80 cm Ø: 176 cm 📦 605 kg



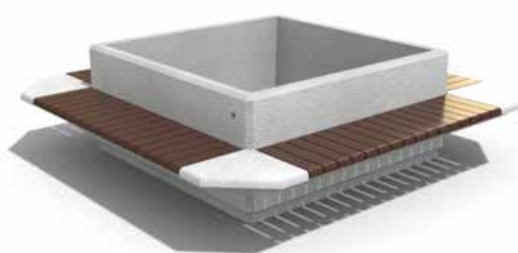
ROUND PLANTER BENCH **MODEL 192**

H: 65 cm Ø: 176 cm 📦 510 kg



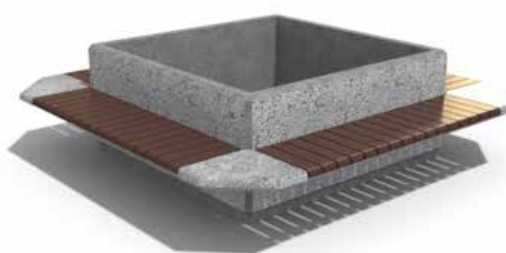
ROUND PLANTER BENCH **MODEL 194**

H: 65 cm Ø: 156 cm 📦 360 kg



SQUARE PLANTER BENCH **MODEL 93**

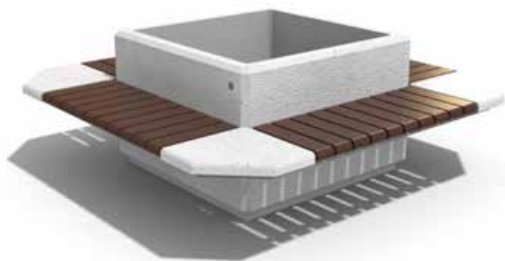
L: 225 cm B: 225 cm H: 65 cm 📦 1050 kg



SQUARE PLANTER BENCH **MODEL 213**

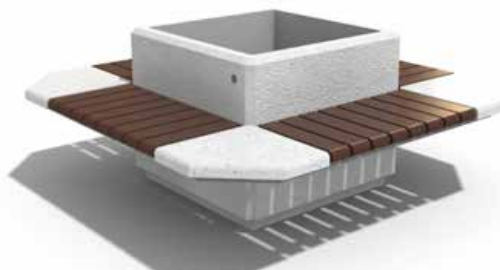
L: 210 cm B: 210 cm H: 65 cm 📦 880 kg

CONCRETE BENCHES



SQUARE PLANTER BENCH **MODEL 225**

📏 L: 175 cm B: 175 cm H: 65 cm 📊 660 kg



SQUARE PLANTER BENCH **MODEL 227**

📏 L: 155 cm B: 155 cm H: 65 cm 📊 460 kg



CONCRETE EASY-CHAIR **MODEL 106**

📏 L: 90 cm B: 55 cm H: 92 cm 📊 310 kg



CONCRETE STOOL **MODEL 112**

📏 H: 42 cm Ø: 40 cm 📊 95 kg



CONCRETE STOOL **MODEL 189**

📏 H: 40 cm Ø: 40 cm 📊 65 kg



CONCRETE STOOL **MODEL 191**

📏 L: 40 cm B: 40 cm H: 40 cm 📊 60 kg



CONCRETE STOOL **MODEL 265**

📏 L: 45 cm B: 45 cm H: 45 cm 📊 160 kg

METAL BENCHES



METAL BENCHES



METAL BENCH

MODEL 124

L: 191 cm B: 56 cm H: 82 cm  42 kg



METAL BENCH

MODEL 48

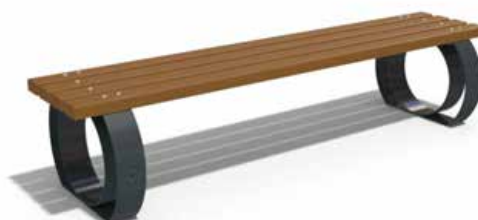
L: 190 cm B: 64 cm H: 84 cm  28 kg



METAL BENCH

MODEL 144

L: 191 cm B: 61 cm H: 80 cm  42 kg



METAL BENCH

MODEL 50

L: 190 cm B: 54 cm H: 42 cm  32 kg



METAL BENCH

MODEL 52

L: 190 cm B: 60 cm H: 82 cm  43 kg



METAL BENCH

MODEL 87

L: 190 cm B: 60 cm H: 82 cm  48 kg



METAL BENCH

MODEL 133

L: 190 cm B: 35 cm H: 42 cm  35 kg



METAL BENCH

MODEL 97

L: 155 cm B: 40 cm H: 60 cm  10 kg

METAL BENCHES



PLAY TABLE

MODEL 250

L: 190 cm B: 148 cm H: 74 cm  270 kg



PICNIC TABLE

MODEL 251

L: 190 cm B: 148 cm H: 74 cm  270 kg



METAL PICNIC TABLE

MODEL 228

L: 190 cm B: 148 cm H: 72 cm  100 kg



METAL PICNIC TABLE

MODEL 113

L: 190 cm B: 148 cm H: 72 cm  45 kg

CONCRETE LITTER BINS



CONCRETE LITTER BINS



CONCRETE LITTER BIN

MODEL 41

☞ H: 101.5 cm Ø: 50 cm 🗑️ 70 L 🏠 180 kg



CONCRETE LITTER BIN

MODEL 128

☞ H: 101.5 cm Ø: 50 cm 🗑️ 70 L 🏠 180 kg



CIGARETTE LITTER BIN / ASHTRAY

MODEL 253

☞ H: 105 cm Ø: 20 cm 🗑️ 5 L 🏠 85 kg



CONCRETE LITTER BIN

MODEL 127

☞ H: 80 cm Ø: 46 cm 🗑️ 40 L 🏠 160 kg



CONCRETE LITTER BIN

MODEL 240

☞ L: 39 cm B: 39 cm H: 85 cm 🗑️ 35 L 🏠 145 kg



CONCRETE LITTER BIN

MODEL 241

☞ L: 39 cm B: 39 cm H: 85 cm 🗑️ 35 L 🏠 145 kg



CONCRETE LITTER BIN

MODEL 182

☞ L: 39 cm B: 39 cm H: 90 cm 🗑️ 30 L 🏠 140 kg



CONCRETE LITTER BIN

MODEL 215

☞ L: 50 cm B: 50 cm H: 110 cm 🗑️ 70 L 🏠 265 kg

CONCRETE LITTER BINS



CONCRETE LITTER BIN

MODEL 242

☞ L: 50 cm B: 50 cm H: 110 cm 🗑️ 90 L 🏠 275 kg



CONCRETE LITTER BIN

MODEL 243

☞ L: 50 cm B: 50 cm H: 110 cm 🗑️ 90 L 🏠 275 kg



CONCRETE LITTER BIN

MODEL 236

☞ H: 85 cm Ø: 40 cm 🗑️ 30 L 🏠 100 kg



CONCRETE LITTER BIN

MODEL 235

☞ H: 85 cm Ø: 40 cm 🗑️ 30 L 🏠 100 kg



CONCRETE LITTER BIN

MODEL 216

☞ L: 30 cm B: 30 cm H: 70 cm 🗑️ 15 L 🏠 75 kg



DOG WASTE BIN

MODEL 181

☞ L: 30 cm B: 30 cm H: 70 cm 🗑️ 15 L 🏠 75 kg



CONCRETE LITTER BIN

MODEL 36

☞ H: 70 cm Ø: 45 cm 🗑️ 35/50 L 🏠 130 kg



CONCRETE LITTER BIN

MODEL 271

☞ H: 55 cm Ø: 33 cm 🗑️ 20 L 🏠 60 kg

CONCRETE LITTER BINS



CONCRETE LITTER BIN

MODEL 72

📏 L: 38 cm B: 38 cm H: 62 cm 🗑️ 30 L 🏠 120 kg



CONCRETE LITTER BIN

MODEL 43

📏 H: 61 cm Ø: 38 cm 🗑️ 35 L 🏠 30 kg

METAL LITTER BINS



METAL LITTER BINS



LITTER BIN

MODEL 172

📏 L: 39 cm B: 39 cm H: 90 cm 🗑️ 35 L 🏠 32 kg



LITTER BIN

MODEL 217

📏 L: 30 cm B: 30 cm H: 70 cm 🗑️ 25 L 🏠 25 kg



DOG WASTE BIN

MODEL 171

📏 L: 30 cm B: 30 cm H: 70 cm 🗑️ 25 L 🏠 25 kg



LITTER BIN

MODEL 45

📏 H: 82 cm Ø: 55 cm 🗑️ 70 L 🏠 80 kg



LITTER BIN

MODEL 69

📏 H: 60 cm Ø: 38 cm 🗑️ 35 L 🏠 42 kg



LITTER BIN

MODEL 91

📏 L: 50 cm B: 32 cm H: 90 cm 🗑️ 30 L 🏠 25 kg



LITTER BIN

MODEL 90

📏 L: 50 cm B: 32 cm H: 86 cm 🗑️ 30 L 🏠 25 kg

RECYCLING LITTER BINS



RECYCLING LITTER BINS



RECYCLING LITTER BIN **MODEL 244R**

☞ L: 110 cm B: 50 cm H: 110 cm ☞ 3 x 75 L ♻️ 460 kg



RECYCLING LITTER BIN **MODEL 245R**

☞ L: 85 cm B: 39 cm H: 85 cm ☞ 3 x 35 L ♻️ 230 kg



RECYCLING LITTER BIN **MODEL 249R**

☞ H: 101.5 cm Ø: 50 cm ☞ 3 x 22 L ♻️ 180 kg



RECYCLING LITTER BIN **MODEL 128R**

☞ H: 101.5 cm Ø: 50 cm ☞ 3 x 70 L ♻️ 3 x 180 kg



RECYCLING LITTER BIN **MODEL 235R**

☞ H: 85 cm Ø: 40 cm ☞ 3 x 30 L ♻️ 3 x 100 kg



RECYCLING LITTER BIN **MODEL 215R**

☞ L: 50 cm B: 50 cm H: 110 cm ☞ 3 x 70 L ♻️ 3 x 265 kg



RECYCLING LITTER BIN **MODEL 216R**

☞ L: 30 cm B: 30 cm H: 70 cm ☞ 3 x 15 L ♻️ 3 x 75 kg



RECYCLING LITTER BIN **MODEL 182R**

☞ L: 39 cm B: 39 cm H: 90 cm ☞ 3 x 30 L ♻️ 3 x 160 kg

CONCRETE PLANTERS



CONCRETE PLANTERS



CONCRETE PLANTER BENCH YIN-YANG **MODEL 260**

H: 44 cm Ø: 220 cm 1640 kg



CONCRETE PLANTER BENCH YIN-YANG **MODEL 261**

H: 44 cm Ø: 220 cm 1920 kg



CONCRETE PLANTER BENCH YIN-YANG **MODEL 262**

H: 65 cm Ø: 220 cm 1960 kg



CONCRETE PLANTER BENCH YIN-YANG **MODEL 263**

H: 65 cm Ø: 220 cm 2140 kg



ROUND CONCRETE PLANTER **MODEL 272**

H: 100 cm Ø: 200 cm 1800 kg



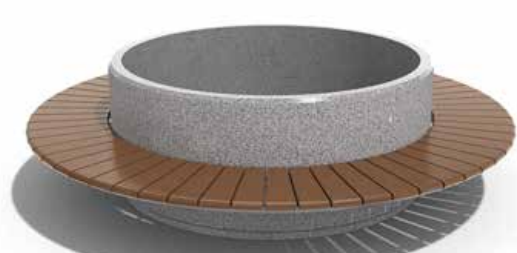
ROUND PLANTER BENCH **MODEL 273**

H: 100 cm Ø: 300 cm 1940 kg



ROUND CONCRETE PLANTER **MODEL 274**

H: 80 cm Ø: 200 cm 1500 kg



ROUND PLANTER BENCH **MODEL 275**

H: 80 cm Ø: 300 cm 1640 kg

CONCRETE PLANTERS



ROUND CONCRETE PLANTER **MODEL 95**

H: 65 cm Ø: 150 cm ⚖ 700 kg



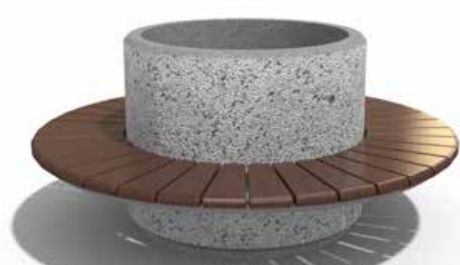
ROUND PLANTER BENCH **MODEL 92**

H: 65 cm Ø: 225 cm ⚖ 800 kg



ROUND CONCRETE PLANTER **MODEL 26**

H: 80 cm Ø: 100 cm ⚖ 530 kg



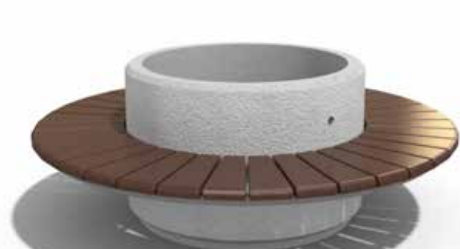
ROUND PLANTER BENCH **MODEL 193**

H: 80 cm Ø: 176 cm ⚖ 605 kg



ROUND CONCRETE PLANTER **MODEL 21**

H: 65 cm Ø: 100 cm ⚖ 435 kg



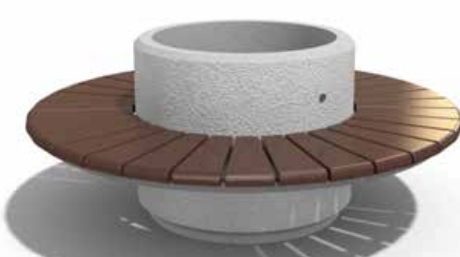
ROUND PLANTER BENCH **MODEL 192**

H: 65 cm Ø: 176 cm ⚖ 510 kg



ROUND CONCRETE PLANTER **MODEL 22**

H: 65 cm Ø: 80 cm ⚖ 300 kg



ROUND PLANTER BENCH **MODEL 194**

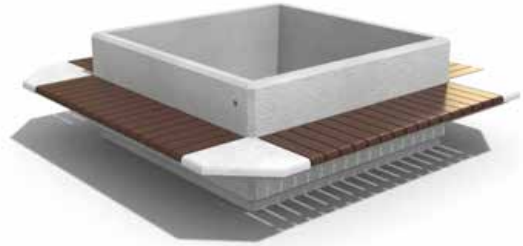
H: 65 cm Ø: 156 cm ⚖ 360 kg

CONCRETE PLANTERS



SQUARE CONCRETE PLANTER **MODEL 96**

📏 L: 150 cm B: 150 cm H: 65 cm 📊 900 kg



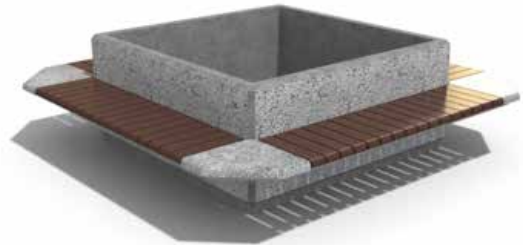
SQUARE PLANTER BENCH **MODEL 93**

📏 L: 225 cm B: 225 cm H: 65 cm 📊 1050 kg



SQUARE CONCRETE PLANTER **MODEL 214**

📏 L: 135 cm B: 135 cm H: 65 cm 📊 720 kg



SQUARE PLANTER BENCH **MODEL 213**

📏 L: 210 cm B: 210 cm H: 65 cm 📊 880 kg



SQUARE CONCRETE PLANTER **MODEL 224**

📏 L: 100 cm B: 100 cm H: 65 cm 📊 550 kg



SQUARE PLANTER BENCH **MODEL 225**

📏 L: 175 cm B: 175 cm H: 65 cm 📊 660 kg



SQUARE CONCRETE PLANTER **MODEL 226**

📏 L: 80 cm B: 80 cm H: 65 cm 📊 370 kg



SQUARE PLANTER BENCH **MODEL 227**

📏 L: 155 cm B: 155 cm H: 65 cm 📊 460 kg

CONCRETE PLANTERS



ROUND CONCRETE PLANTER **MODEL 19**

H: 21 cm Ø: 24 cm 10 kg



ROUND CONCRETE PLANTER **MODEL 23**

H: 30 cm Ø: 40 cm 45 kg



ROUND CONCRETE PLANTER **MODEL 20**

H: 45 cm Ø: 40 cm 75 kg



ROUND CONCRETE PLANTER **MODEL 16**

H: 55 cm Ø: 60 cm 160 kg



ROUND CONCRETE PLANTER **MODEL 15**

H: 40 cm Ø: 60 cm 115 kg



ROUND CONCRETE PLANTER **MODEL 17**

H: 50 cm Ø: 80 cm 240 kg



CONCRETE PLANTER **MODEL 24**

L: 70 cm B: 24 cm H: 20 cm 40 kg



CONCRETE PLANTER **MODEL 25**

L: 150 cm B: 45 cm H: 30 cm 170 kg

CONCRETE PLANTERS



CONCRETE PLANTER

MODEL 27

📏 L: 150 cm B: 45 cm H: 45 cm 📊 260 kg



CONCRETE PLANTER

MODEL 196

📏 L: 150 cm B: 55 cm H: 65 cm 📊 475 kg



SQUARE CONCRETE PLANTER

MODEL 77

📏 L: 38 cm B: 38 cm H: 43 cm 📊 70 kg



SQUARE CONCRETE PLANTER

MODEL 76

📏 L: 38 cm B: 38 cm H: 62 cm 📊 100 kg



SQUARE CONCRETE PLANTER

MODEL 82

📏 L: 50 cm B: 50 cm H: 45 cm 📊 120 kg



SQUARE CONCRETE PLANTER

MODEL 81

📏 L: 50 cm B: 50 cm H: 65 cm 📊 185 kg



SQUARE CONCRETE PLANTER

MODEL 75

📏 L: 85 cm B: 85 cm H: 45 cm 📊 280 kg



SQUARE CONCRETE PLANTER

MODEL 74

📏 L: 85 cm B: 85 cm H: 65 cm 📊 380 kg

CONCRETE PLANTERS



SQUARE CONCRETE PLANTER **MODEL 73**

📏 L: 85 cm B: 85 cm H: 85 cm 📊 500 kg



RECTANGULAR CONCRETE PLANTER **MODEL 80**

📏 L: 90 cm B: 30 cm H: 28 cm 📊 85 kg



CONCRETE PLANTER **MODEL 173**

📏 L: 77 cm B: 28 cm H: 30 cm 📊 75 kg



CONCRETE PLANTER **MODEL 176**

📏 L: 117 cm B: 38 cm H: 40 cm 📊 185 kg



RECTANGULAR CONCRETE PLANTER **MODEL 141**

📏 L: 150 cm B: 37 cm H: 40 cm 📊 235 kg



RECTANGULAR CONCRETE PLANTER **MODEL 129**

📏 L: 150 cm B: 45 cm H: 40 cm 📊 260 kg



RECTANGULAR CONCRETE PLANTER **MODEL 131**

📏 L: 150 cm B: 45 cm H: 57.5 cm 📊 350 kg



RECTANGULAR CONCRETE PLANTER **MODEL 132**

📏 L: 150 cm B: 45 cm H: 75 cm 📊 440 kg

CONCRETE PLANTERS



CONCRETE PLANTER

MODEL 175

📏 L: 58 cm B: 38 cm H: 40 cm 📊 95 kg



CONCRETE PLANTER

MODEL 174

📏 L: 77 cm B: 38 cm H: 40 cm 📊 120 kg



RECTANGULAR CONCRETE PLANTER

MODEL 79

📏 L: 90 cm B: 50 cm H: 45 cm 📊 200 kg



RECTANGULAR CONCRETE PLANTER

MODEL 78

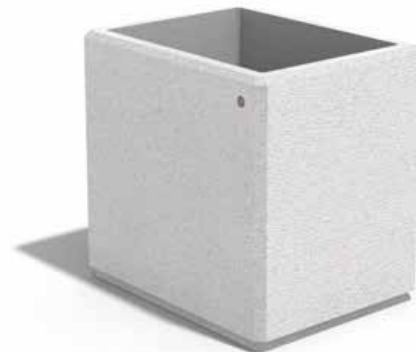
📏 L: 90 cm B: 50 cm H: 65 cm 📊 250 kg



CONCRETE PLANTER

MODEL 177

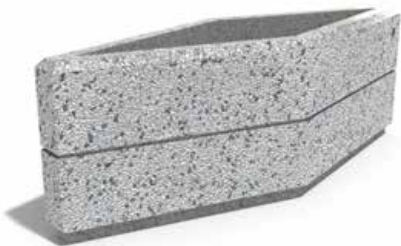
📏 L: 77 cm B: 58 cm H: 45 cm 📊 180 kg



CONCRETE PLANTER

MODEL 264

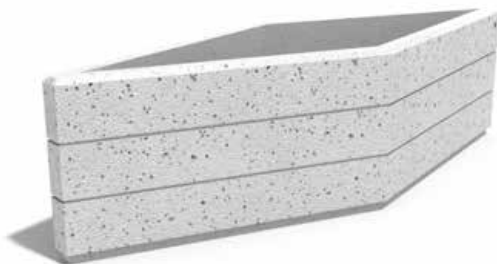
📏 L: 90 cm B: 70 cm H: 85 cm 📊 480 kg



CONCRETE PLANTER

MODEL 229

📏 L: 130 cm B: 45 cm H: 45 cm 📊 200 kg

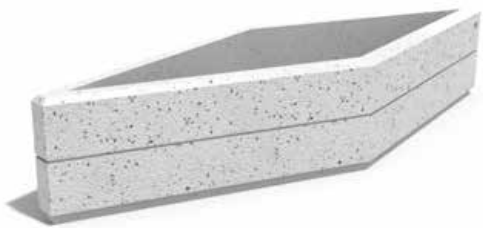


CONCRETE PLANTER

MODEL 230

📏 L: 240 cm B: 80 cm H: 65 cm 📊 665 kg

CONCRETE PLANTERS



CONCRETE PLANTER

MODEL 231

📏 L: 240 cm B: 80 cm H: 45 cm 📊 485 kg

OUTDOOR TABLES



OUTDOOR TABLES



CONCRETE PICNIC TABLE **MODEL 108**

📏 L: 190 cm B: 148 cm H: 72 cm ⚖️ 290 kg



CONCRETE PICNIC TABLE **MODEL 219**

📏 L: 190 cm B: 148 cm H: 72 cm ⚖️ 260 kg



CONCRETE PICNIC TABLE **MODEL 116**

📏 L: 190 cm B: 148 cm H: 74 cm ⚖️ 450 kg



CONCRETE PICNIC TABLE **MODEL 220**

📏 L: 190 cm B: 148 cm H: 74 cm ⚖️ 420 kg



CONCRETE PICNIC TABLE **MODEL 118**

📏 L: 190 cm B: 148 cm H: 74 cm ⚖️ 590 kg



CONCRETE PICNIC TABLE **MODEL 222**

📏 L: 190 cm B: 148 cm H: 74 cm ⚖️ 560 kg



CONCRETE PLAY TABLE **MODEL 115**

📏 L: 190 cm B: 148 cm H: 74 cm ⚖️ 450 kg



CONCRETE PLAY TABLE **MODEL 117**

📏 L: 190 cm B: 148 cm H: 74 cm ⚖️ 590 kg

OUTDOOR TABLES



CONCRETE PLAY TABLE

MODEL 221

📏 L: 190 cm B: 148 cm H: 74 cm 📊 420 kg



CONCRETE PLAY TABLE

MODEL 223

📏 L: 190 cm B: 148 cm H: 74 cm 📊 560 kg



PLAY TABLE

MODEL 250

📏 L: 190 cm B: 148 cm H: 74 cm 📊 270 kg



PICNIC TABLE

MODEL 251

📏 L: 190 cm B: 148 cm H: 74 cm 📊 270 kg



METAL PICNIC TABLE

MODEL 228

📏 L: 190 cm B: 148 cm H: 72 cm 📊 100 kg



METAL PICNIC TABLE

MODEL 113

📏 L: 190 cm B: 148 cm H: 72 cm 📊 45 kg



CONCRETE PLAY TABLE

MODEL 111

📏 L: 80 cm B: 80 cm H: 70 cm 📊 250 kg



CONCRETE PLAY TABLE

MODEL 188

📏 H: 70 cm Ø: 80 cm 📊 260 kg

OUTDOOR TABLES



CONCRETE PLAY TABLE

MODEL 190

📏 L: 80 cm B: 80 cm H: 70 cm 📊 210 kg

PLAY TABLES & PLAYGROUNDS



PLAY TABLES & PLAYGROUNDS



CONCRETE PLAY TABLE **MODEL 115**

📏 L: 190 cm B: 148 cm H: 74 cm 📊 450 kg



CONCRETE PLAY TABLE **MODEL 117**

📏 L: 190 cm B: 148 cm H: 74 cm 📊 590 kg



CONCRETE PLAY TABLE **MODEL 221**

📏 L: 190 cm B: 148 cm H: 74 cm 📊 420 kg



CONCRETE PLAY TABLE **MODEL 223**

📏 L: 190 cm B: 148 cm H: 74 cm 📊 560 kg



PLAY TABLE **MODEL 250**

📏 L: 190 cm B: 148 cm H: 74 cm 📊 270 kg



CONCRETE PLAY TABLE **MODEL 111**

📏 L: 80 cm B: 80 cm H: 70 cm 📊 250 kg



CONCRETE PLAY TABLE **MODEL 188**

📏 H: 70 cm Ø: 80 cm 📊 260 kg



CONCRETE PLAY TABLE **MODEL 190**

📏 L: 80 cm B: 80 cm H: 70 cm 📊 210 kg

PLAY TABLES & PLAYGROUNDS



GARDEN CHESS / PLAYGROUND

MODEL 162

☞ L: 500 cm B: 500 cm H: 5 cm

TABLE TENNIS TABLES



TABLE TENNIS TABLES

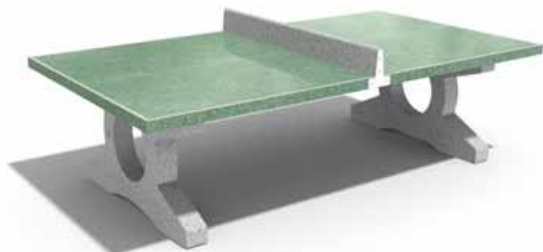


TABLE TENNIS TABLE

MODEL 89

L: 274 cm B: 152.5 cm H: 76 cm 1000 kg



TABLE TENNIS TABLE

MODEL 180

L: 274 cm B: 152.5 cm H: 76 cm 1000 kg

DRINKING FOUNTAINS



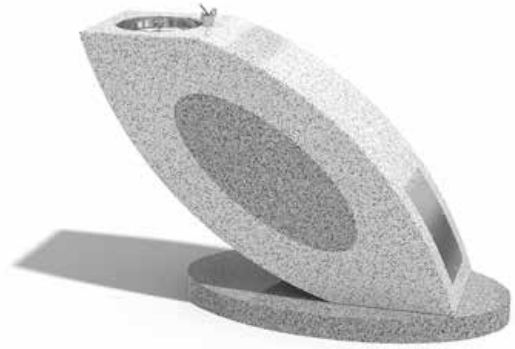
DRINKING FOUNTAINS



DRINKING FOUNTAIN

MODEL 123

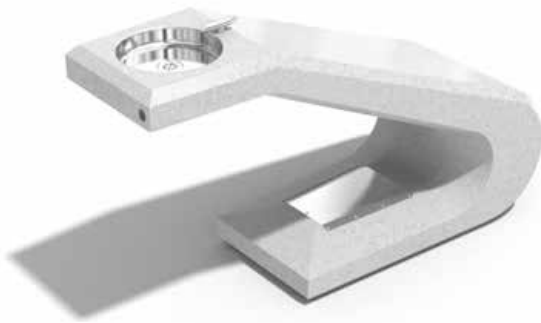
📏 L: 110 cm B: 43 cm H: 90 cm 📊 250 kg



DRINKING FOUNTAIN

MODEL 254

📏 L: 139 cm B: 40 cm H: 92 cm 📊 585 kg



DRINKING FOUNTAIN

MODEL 255

📏 L: 150 cm B: 55 cm H: 85 cm 📊 420 kg



DRINKING FOUNTAIN

MODEL 256

📏 H: 90 cm Ø: 50 cm 📊 180 kg

BICYCLE PARKING RACKS



BICYCLE PARKING RACKS



BIKE RACK

MODEL 166

📏 L: 106 cm B: 79 cm H: 21 cm 📊 215 kg



BIKE RACK

MODEL 167

📏 L: 176 cm B: 43 cm H: 28 cm 📊 70 kg



BIKE RACK

MODEL 164

📏 L: 100 cm B: 55 cm H: 26 cm 📊 85 kg



BIKE RACK

MODEL 257

📏 L: 220 cm B: 38 cm H: 27 cm 📊 70 kg



BIKE RACK

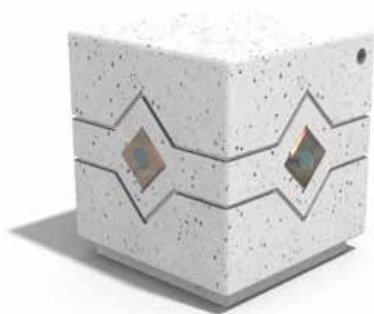
MODEL 258

📏 L: 67 cm B: 7 cm H: 61 cm 📊 5 kg

BOLLARDS



BOLLARDS



CONCRETE CUBE BOLLARD - LED - **MODEL 150**

📏 L: 45 cm B: 45 cm H: 49 cm 📊 190 kg



CONCRETE CUBE BOLLARD **MODEL 149**

📏 L: 45 cm B: 45 cm H: 49 cm 📊 230 kg



CONCRETE CUBE BOLLARD **MODEL 184**

📏 L: 38 cm B: 38 cm H: 40 cm 📊 130 kg



CONCRETE SPHERE BOLLARD **MODEL 94**

📏 Ø: 60 cm 📊 265 kg



CONCRETE SPHERE BOLLARD **MODEL 10**

📏 Ø: 30 cm 📊 33 kg



CONCRETE SPHERE BOLLARD **MODEL 11**

📏 Ø: 40 cm 📊 80 kg



CONCRETE BOLLARD **MODEL 85**

📏 H: 35 cm Ø: 60 cm 📊 170 kg



CONCRETE BOLLARD **MODEL 86**

📏 H: 30 cm Ø: 50 cm 📊 100 kg

BOLLARDS



CONCRETE BOLLARD

MODEL 146

H: 60 cm Ø: 36 cm 130 kg



CONCRETE BOLLARD

MODEL 145

H: 50 cm Ø: 28 cm 65 kg



CONCRETE CONE BOLLARD

MODEL 14

H: 80 cm Ø: 50 cm 170 kg



CONCRETE CONE BOLLARD

MODEL 13

H: 62 cm Ø: 35 cm 80 kg



CONCRETE BOLLARD

MODEL 266

H: 15 cm Ø: 30 cm 17 kg



CONCRETE BOLLARD

MODEL 267

H: 20 cm Ø: 40 cm 40 kg



STEEL BOLLARD

MODEL 32

H: 100 cm Ø: 10 cm 10 kg



STEEL BOLLARD

MODEL 33

H: 80 cm Ø: 10 cm 10 kg

PARASOL BASE



PARASOL BASE



PARASOL BASE

MODEL 29

☞ Ø: 65 cm ☜: 6.8 cm ⚖ 100 kg



PARASOL BASE

MODEL 31

☞ Ø: 55 cm ☜: 4.4 cm ⚖ 60 kg



PARASOL BASE

MODEL 30

☞ H: 40 cm Ø: 68 cm ⚖ 125 kg

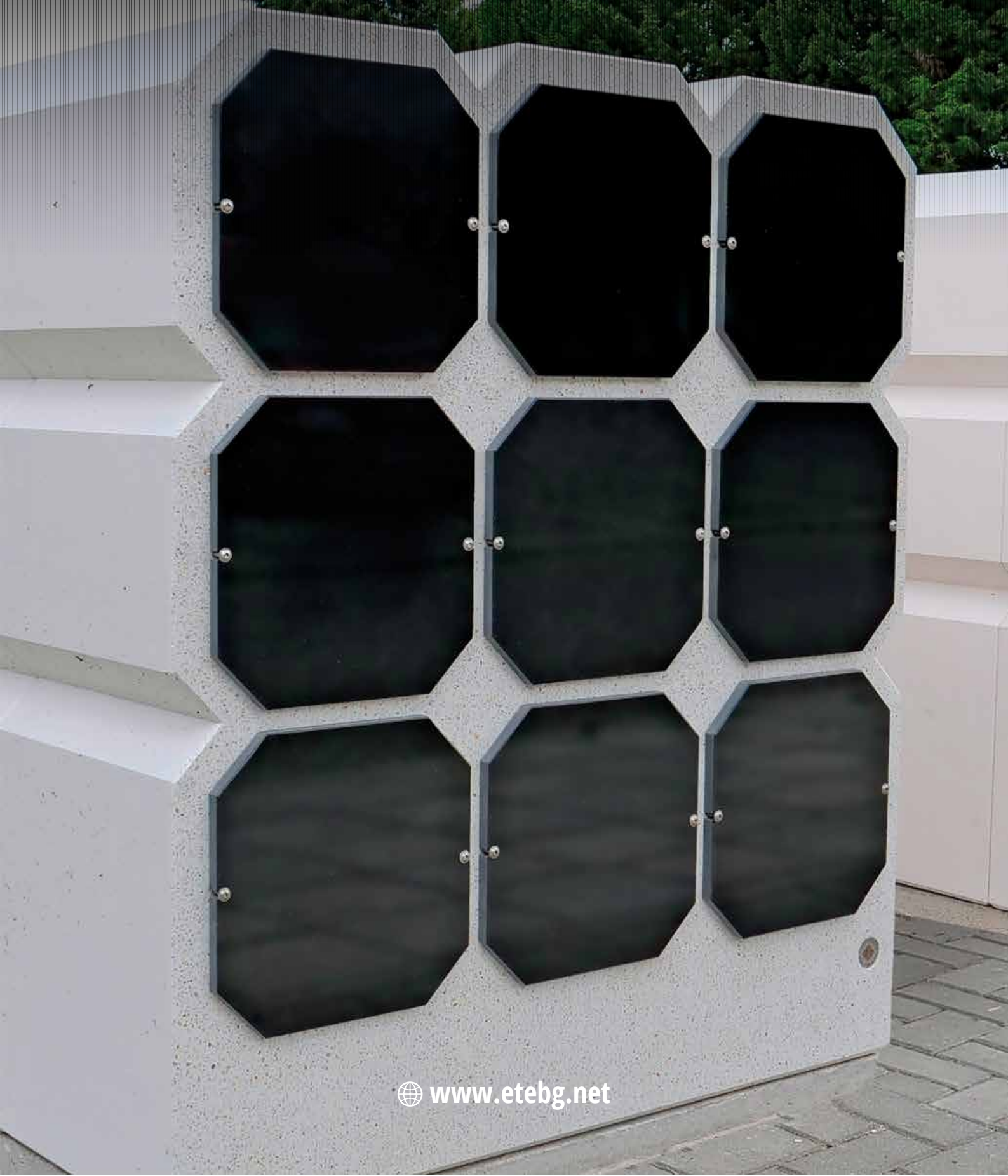


PARASOL BASE

MODEL 218

☞ H: 30 cm Ø: 52 cm ⚖ 65 kg

COLUMBARIUM MEMORIALS



COLUMBARIUM MEMORIALS



COLUMBARIUM WALL

MODEL 201

H: 240 cm Ø: 270 cm 12000 kg



COLUMBARIUM WALL

MODEL 204

L: 100 cm B: 50 cm H: 154 cm 1200 kg



COLUMBARIUM WALL

MODEL 205

L: 100 cm B: 50 cm H: 154 cm 1200 kg



COLUMBARIUM WALL

MODEL 206

L: 100 cm B: 50 cm H: 154 cm 1200 kg



COLUMBARIUM WALL

MODEL 207

L: 133 cm B: 50 cm H: 153 cm 1400 kg

ACCESSORIES



ACCESSORIES



SET FOR GAME OF "LUDO"



SET FOR GAME OF "CHESS"



SET FOR GAME OF "BACKGAMMON"



SET FOR GAME OF "NINE MEN'S MORRIS/MILL"



SET FOR GAME OF "CHECKERS/DRAUGHTS"



SET FOR GAME OF "GARDEN CHESS"

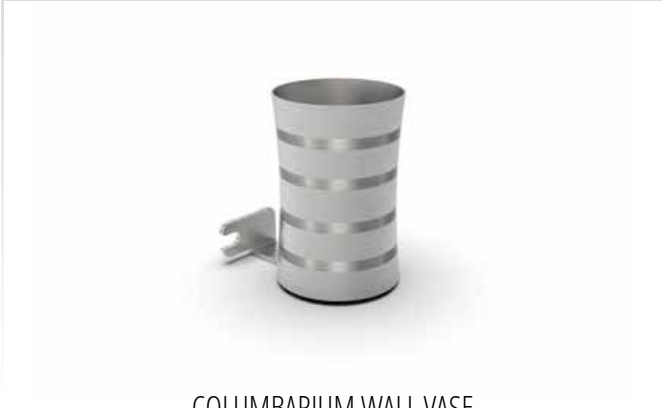


SET FOR GAME OF "TABLE TENNIS"



DRINKING FAUCET WITH PUSH BUTTON

ACCESSORIES



COLUMBARIUM WALL VASE

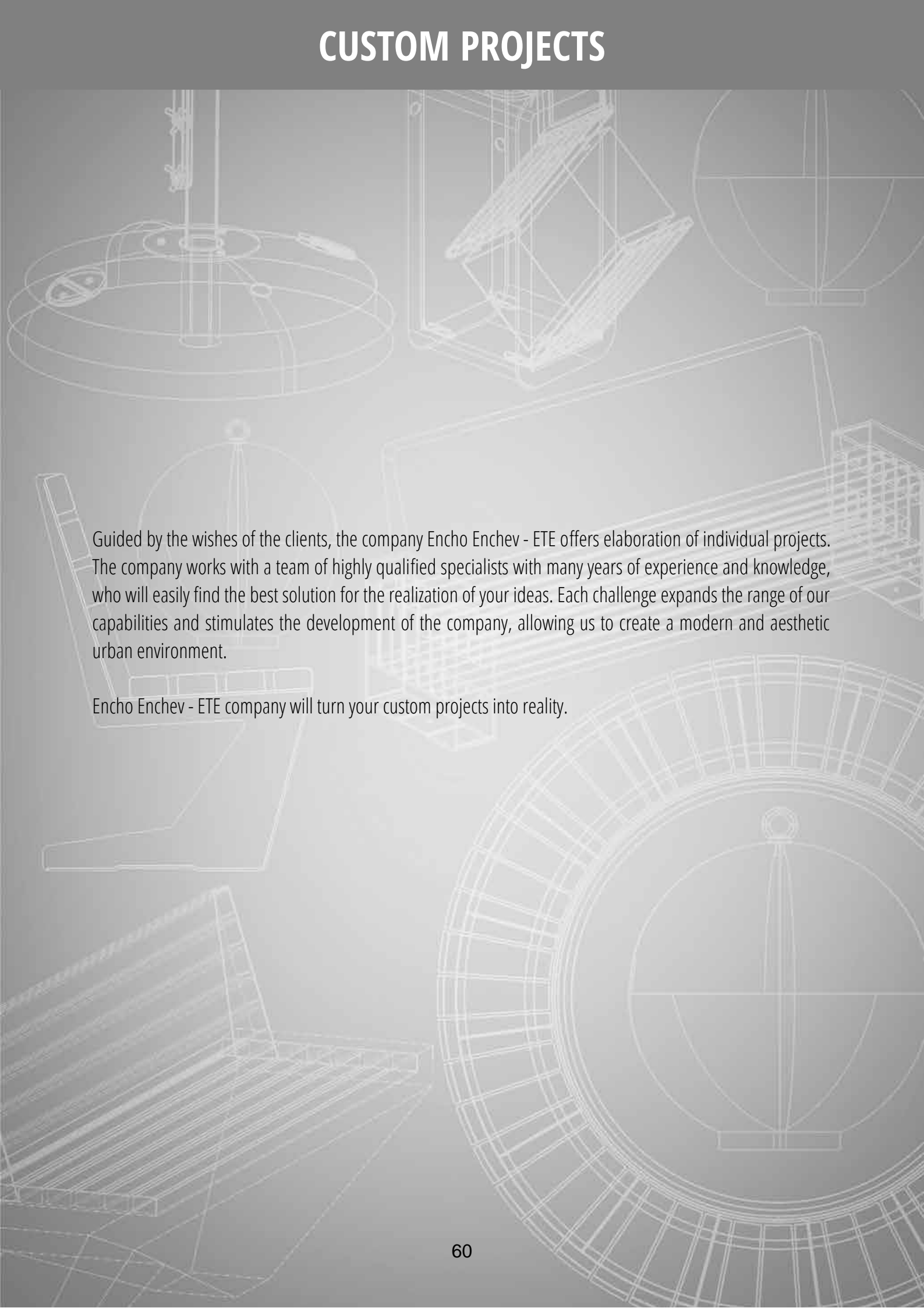
CERTIFICATES

As a prospect for sustainable development, Encho Enchev - ETE compalny implements and maintains an integrated management system that meets all the requirements of the global business community. Three international standards have been introduced:



Winner of gold and silver awards on international exhibitions.

CUSTOM PROJECTS



Guided by the wishes of the clients, the company Encho Enchev - ETE offers elaboration of individual projects. The company works with a team of highly qualified specialists with many years of experience and knowledge, who will easily find the best solution for the realization of your ideas. Each challenge expands the range of our capabilities and stimulates the development of the company, allowing us to create a modern and aesthetic urban environment.

Encho Enchev - ETE company will turn your custom projects into reality.











CONTENT

MATERIALS	1-4
CONCRETE BENCHES	5-15
METAL BENCHES	16-18
CONCRETE LITTER BINS	19-22
METAL LITTER BINS	23-24
RECYCLING LITTER BINS	25-26
CONCRETE PLANTERS	27-35
OUTDOOR TABLES	36-39
OUTDOOR PLAY TABLES & PLAYGROUNDS ...	40-42
TABLE TENNIS TABLES	43-44
DRINKING FOUNTAINS	45-46
BICYCLE STANDS	47-48
BOLLARDS	49-51
PARASOL BASES	52-53
COLUMBARIUM WALLS	54-55
ACCESSORIES	56-58
CERTIFICATES	59
INDIVIDUAL PROJECTS	60



ENCHO ENCHEV - ETE

STREET & URBAN FURNITURE

DESIGN AND DEVELOP CUSTOM PROJECTS



📍 25 Dimitar Blagoev str., Dolna Oryahovitsa 5130, Bulgaria | 5P4W+5C

☎ +359 882 279 759 / +359 882 277 414 📞 +359 6173 2272 ✉ sales@etebg.net

🌐 www.etebg.net